

Sense Thunder-E Mini Thermal Terminal solutions



SenseThunder Mini

顛覆創新探溫系統，滿載重量
級功能，卻超級簡練易用。

Advantages and functions



Face
Recognition
Function



Efficient
safe
High
accuracy



Traceable
Record

SenseThunder E-mini Key Features

Safe

Access
Control

Traceable
Record

High
accuracy

Instant
notifications



Efficient

Face
recognition
Function



Product introduction

5.5 inches display screen

200M Pixels RGB +200M Pixels Infrared
Camera

Accuracy $\pm 0.4C$

Over 10,000 thermal imaging
temperature points

Support Wi-Fi

SenseThunder E- Mini

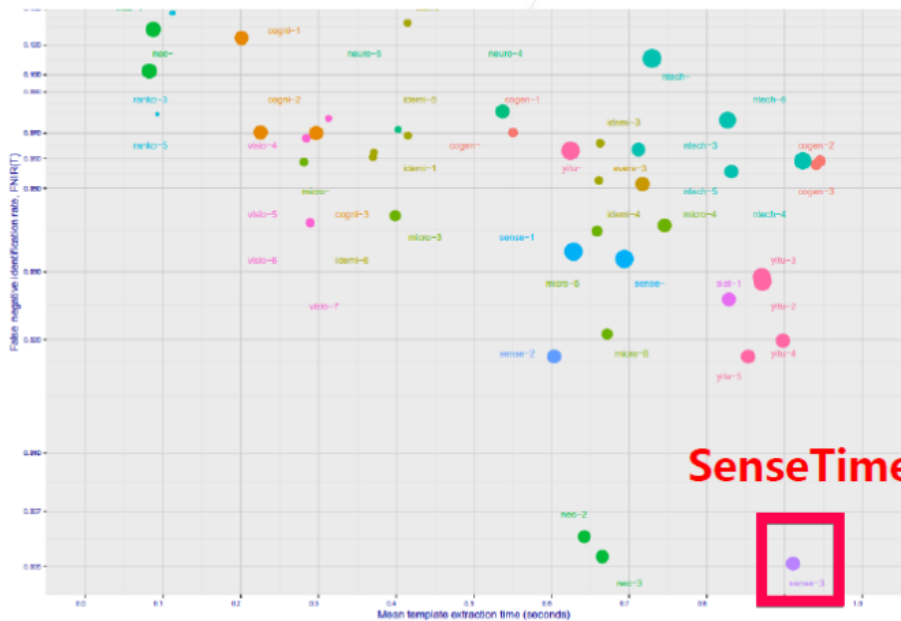


High efficiency, safe, high accuracy

1. Up to 30 people/min
2. Over 10,000 thermal imaging temperature points
3. Temperature-detectable distance: 1.2m
4. Temperature accuracy $\pm 0.4^{\circ}\text{C}$ (generally $\pm 1^{\circ}\text{C}$)
5. 2 million RGB + 2 million infrared camera
6. It only takes 0.3 seconds to measure



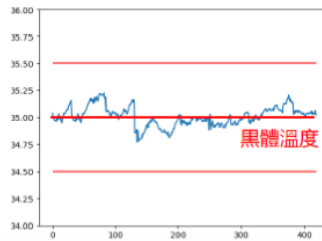
Certificates



SenseTime

Testing at NIST on Face Recognition with less errors among brands

使用黑體檢查溫度測試



CESI證書

委托方名称	深圳市商汤科技有限公司		
委托方地址	深圳市福田区深南中路合作区新洲一路1号A栋201室		
制造单位	深圳市商汤科技有限公司		
检测任务类型	人脸识别-人脸图像信息采集设备检测		
样品名称	商汤智行人脸识别一体机-SenseThinker-C系列热像仪	型号规格	SP2000-PRO-STE1180E1
样品数量	1	样品来源	送样
检测依据	1. SJ/T 11609-2016《人脸识别设备通用规范》 2. SJ/T 1167-2008《信息采集设备》		
检测项目	性能、产品外观结构、功能要求、通讯接口符合性 SJ/T 11609-2016《人脸识别设备通用规范》中相关条款的规定。该产品具备对采集人脸图像的驱动功能，与网络兼容使用，对采集人脸图像的人脸图像采集设备进行检测。在环境温度在15℃、20℃、25℃时，该产品在33℃、34℃、35℃、36℃、37℃、38℃六种温度（环境温度、相对湿度2级）的湿度测试时湿度波动±5%。		
检测环境	温度(TC): 15-25 大气压力(Pa): 101	相对湿度(RH): 42	
检测日期	2020年12月23日		
测试:	李楠	审核:	李楠
审核:	李楠	公章:	(盖章)

CE 證書

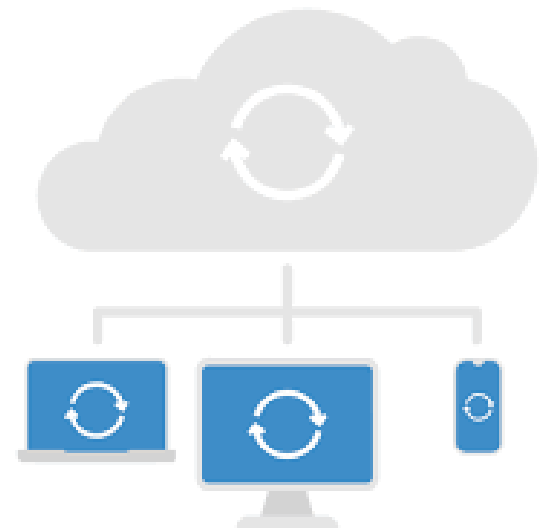
"This is to certify that, on the basis of the tests undertaken according to the test reports numbered SZ20040053E01, the submitted sample list above complies with: EN 55032: 2015/AC:2016 EN 55035: 2017 "

Traceable Records

1. Data in real time
2. Cloud storage or Server storage
3. Support for web interface
4. Traceable on abnormal temperature sequence
5. Platform management
6. Data can be retained
7. Marketing data

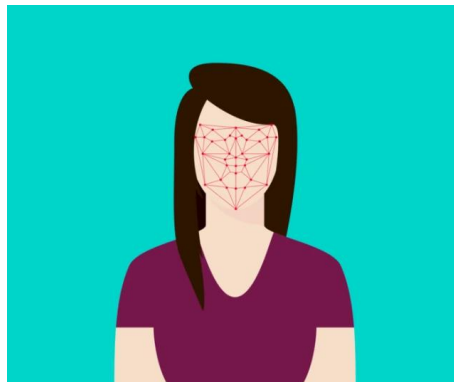


SenseLink SaaS管理平台

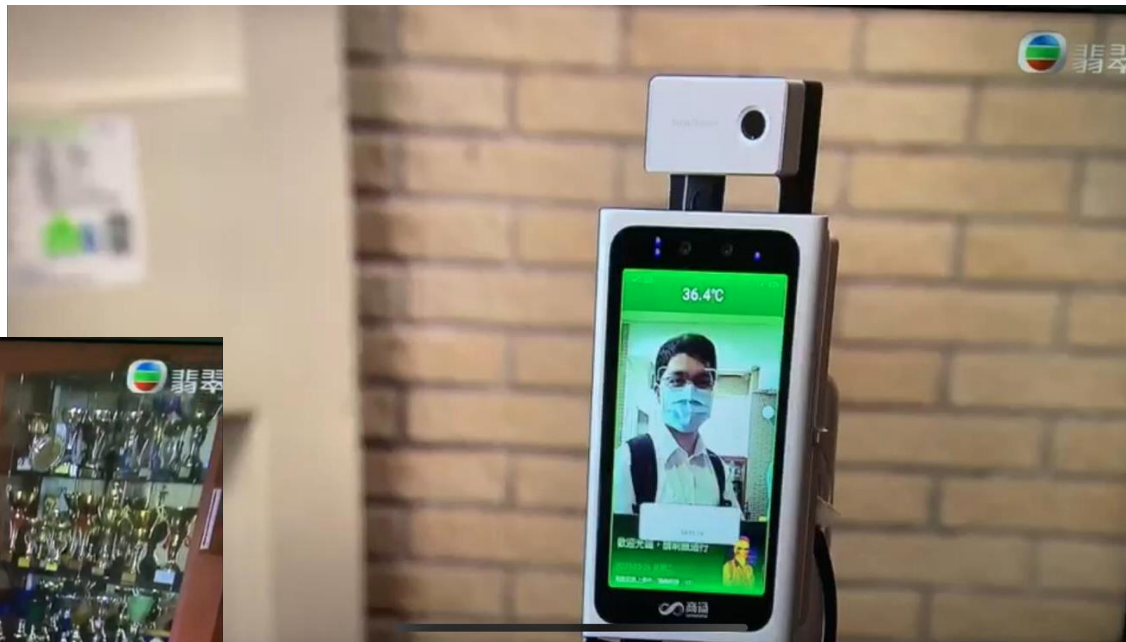


Face recognition Function

1. SenseTime Face Recognition AI Algorithm Technology
2. Simple Set-up
3. Access Control - Face recognition with a mask
(accuracy greater than 90%)
4. Real-time warning for people without masks
5. Rapid temperature screening without affecting passenger flow



News reports





Speed Gate installation



Vertical Stand installation

Managing web interfaces - data synchronization notifications for frontline employees/back-office managers

SenseLink

- Console
- List on devices
- People management
- Policy management
- Event management
- Attendance management
- System management



Product specifications

Product name	SenseThunder-E Mini	
Product features	Key features	1. Temperature measurement using Thermal Detector 2. Face recognition & Attendance Records 3. Access Control
	Use environment	Indoor
	Colour	Silver
Body temperature measurement	Accuracy	±0.4°C
	Temperature range	28°C~42°C
	Measuring Distance	≤1.2m
	Ambient temperature	17~30°C(No wind indoors, avoid direct sunlight)
Communication method	Ethernet	10/100/1000Mbps Ethernet
	WiFi	IEEE802, 11 b/ g/ n standard

Face recognition	Mask recognition	Face recognition Without Removing the Mask & Mask Detection
	Speed	≤0.5s
	Local Facial Images Database	2 Million
	RGB Camera	200 Millions Pixels
	IR Camera	200 Millions Pixels
	Fill-light	IR, 850nm
人機互動	Display Screen	5.5 inches
	Touch Screen	Capacitive touch screen
	Buzzer	Built-in
Installation	Install accessories	Support Speed-gate and vertical stands

Product specifications

Temperature measurement	Detector Type	Uncooled VOx microbolometer
	Thermal Resolutions	120 x 90 pixels
	Field of View	50 deg x 38 deg
	Thermal Sensitivity/NETD	<80mK
	Object Temp. Range	28C ~ 42C
	Image Frequency	25fps
	Operating Temp. Range	0C - 40C
	Storage Temp. Range	-40C - 70C
	System Dimensions	208.2*91.3*40.3mm

Cases in Hong Kong



Cases in Japan



金康科技
GoldenWealth

商湯分銷商
SenseTime
Distributor

Golden Wealth Technology Ltd.

(SenseTime Distributor)

Flat A, 19/F, EGL Tower, 83 Hung To Road, Kwun Tong, HK

A member of China Tech Global